

BioBond

Jiangmen Paint BioBond is a super-strong, highly weather-resistant adhesive for binding gravel. It is suitable for projects such as stone pathways, road repairs, and civil projects.

- Anti-weathering
- High-performance bonding
- High wear resistance
- Long lasting



Applications



Landscaping

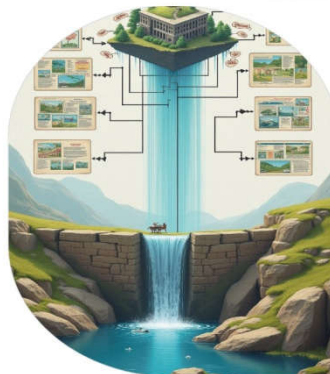
- Paving with natural or artificial stones
- Permeable surface
- Weed prevention
- Anti-wear&tear
- Parking possible

Pavement & Repair



- Rapidly road repairs
- Durable
- Firm

Eco City



- Suitable for
- outdoor
 - Civil project
 - Balancing strength

BioBond

■ Instructions



■ Usage

Stone Spec. (mm)	BioBond* Consumption(kg)	Appx.Stone Weight(kg)
3-5	2.8	72
6-9	2.1	72
11-13	1.5	72

*Based on 3cm overall pavement thickness

Mixable with the following :

- Gravel
- Pebbles

Gravel requirements:

- Roughly clean
- Free from moisture
- Free from sediment, and dust
- Size not exceeding 3cm

■ Founded in 1965 with three Class-A production bases



■ Certifications

ISO 9001:2015
 ISO 14001:2015
 ISO 45001:2018
 IATF 16949:2016
 EcoVadis Bronze



Jiangmen Paint Co., Ltd.

WEB: www.jmcoating.com TEL: +86 0750-3657002
 E-mail: Craig@pj.com.cn WhatsApp: +1-4159876987
 ADD.: No. 18, North 2nd Road, Duruan Town, Jiangmen City, Guangdong Province